

# alfabos

## Clickfix coping fixing instructions

Please read these instructions carefully before starting work.

### 1. Fixing method

Fixing involves only two simple steps:

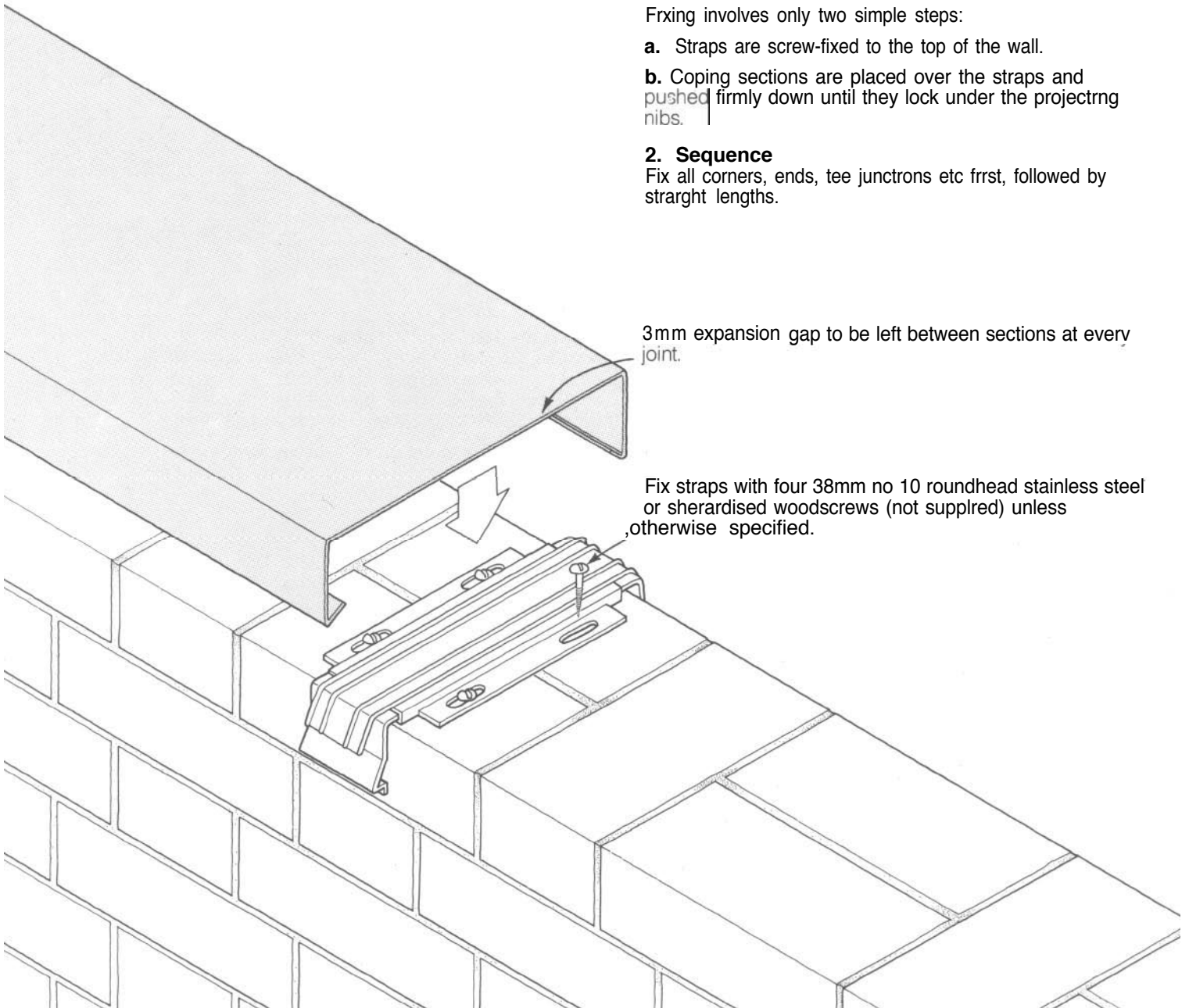
- a. Straps are screw-fixed to the top of the wall.
- b. Coping sections are placed over the straps and pushed firmly down until they lock under the projecting nibs.

### 2. Sequence

Fix all corners, ends, tee junctions etc first, followed by straight lengths.

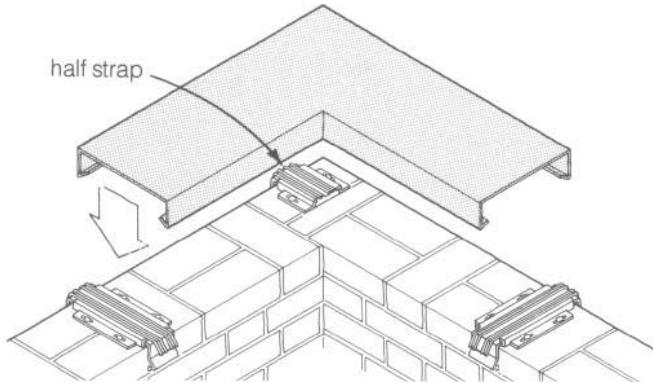
3mm expansion gap to be left between sections at every joint.

Fix straps with four 38mm no 10 roundhead stainless steel or sherardised woodscrews (not supplied) unless otherwise specified.



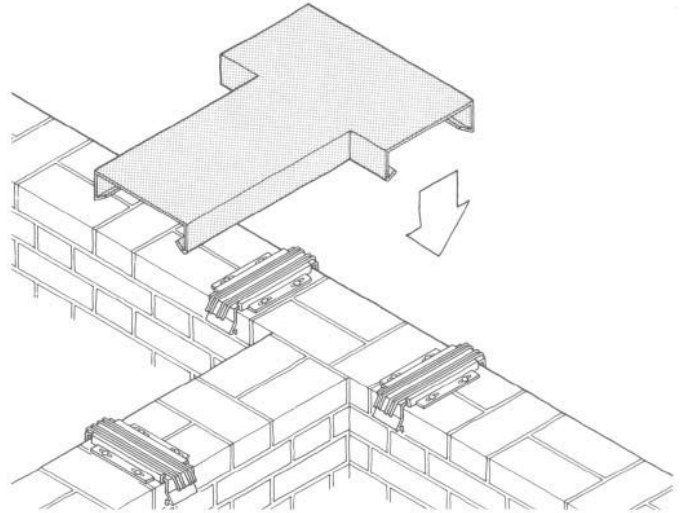
### 3. Corners

Put corner piece in place and mark positions of fixing straps: one strap at each end of the corner piece and a half strap as close as possible to the corner as shown. Fix the straps, packing if necessary to ensure coping will be straight and level. If timber packing is used it should be treated against rot. Stretch a string line along the wall to allow alignment of other straps. Fit the corner piece over the straps.



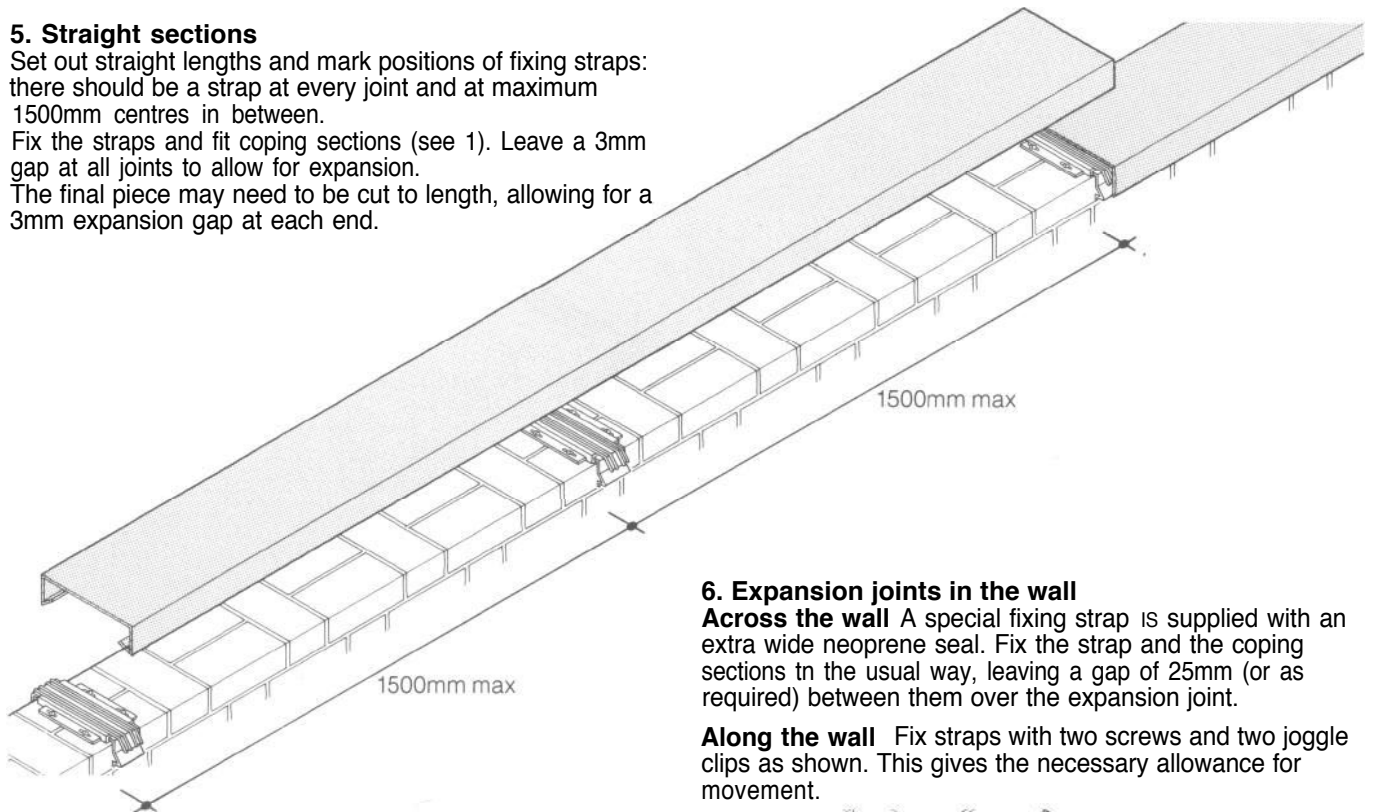
### 4. Tee-junctions, stopends, upstands

Fix these generally as for corners, using a strap at each end. At upstands, install a counter flashing over the coping in accordance with normal good practice.



### 5. Straight sections

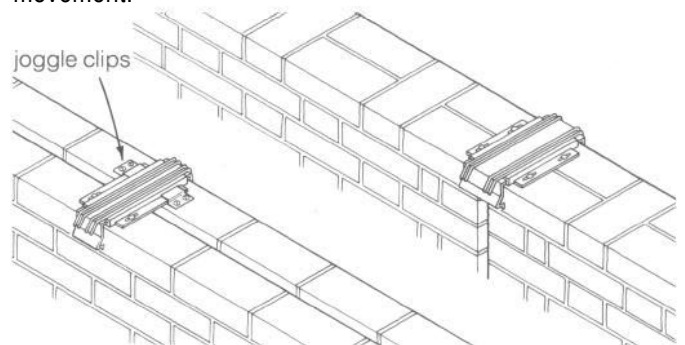
Set out straight lengths and mark positions of fixing straps: there should be a strap at every joint and at maximum 1500mm centres in between. Fix the straps and fit coping sections (see 1). Leave a 3mm gap at all joints to allow for expansion. The final piece may need to be cut to length, allowing for a 3mm expansion gap at each end.



### 6. Expansion joints in the wall

**Across the wall** A special fixing strap is supplied with an extra wide neoprene seal. Fix the strap and the coping sections in the usual way, leaving a gap of 25mm (or as required) between them over the expansion joint.

**Along the wall** Fix straps with two screws and two joggle clips as shown. This gives the necessary allowance for movement.



### 7. Lightning conductor linkages

Roughen surfaces with emery or sand paper or steel wool and fix linkages with stainless steel bolts, using continuity paste to give a good contact; bolts and paste are supplied by Alifabs. A specialist should check the installation for electrical continuity. If the coping has a coated finish, clean back to the metal before fitting linkages. Lightning conductors can be supplied on aluminium plates for site fixing with stainless steel self-tapping screws.

# alifabs

In case of difficulty, contact Alifabs' sales office.

Alifabs Building Products Ltd.

Kernal Court, Walnut Tree Close, Guildford, Surrey, GU1 4UD

Telephone: 01483 546547 Fax: 01483 546548 [www.alifabs.com](http://www.alifabs.com)